

## **Bushy Point Restoration Project**

**Annual Report 2013/14**  
**(1 April 2013 – 31 March 2014)**



## **2013/2014 - Summary of Progress**

- **Planned and managed with DOC and Environment Southland the Living Legends planting days – 83 people on the schools planting day and 150 people on the public planting day — Friday 23 August 2013 and Saturday 24 August 2013.**
- **Planted 1200 locally grown native plants and covered with combi-guards for rabbit control.**
- **Maintained the previous 13 years plantings**
- **Managed major pest control operation (6km of trap network over 90 hectares)**
- **Maintained entrance area and public walkway**
- **Continued weed control (particularly gorse)**
- **Continued grazing horses and balage management.**
- **Managed with Environment Southland the Southland Girls High School break out days with year 7 students – 11-12 March 2014.**
- **Reformatted and printed the self-guided brochure to reflect the changes to track and Living Legends planting area.**
- **Completed work on an Otatara Landcare Group website with linked Bushy Point educational activities funded by Biodiversity Advice Fund – [www.otataralandcare.org](http://www.otataralandcare.org)**
- **Managed a calendar of monthly working afternoons for weeding, putting combi-guards on, track work, planting.**
- **New events – orienteering and geocaching were held at Bushy Point.**



## **1. Aim of the Bushy Point Restoration Project**

The aim of the Bushy Point Restoration Project is to restore a 14 hectare area of rough exotic pasture between two remnants of nationally significant native totara forest to provide a habitat linkage for native birds and to enhance existing forest remnants and other ecosystems. Also, to raise public awareness of the importance of native forest remnants and to provide a practical long term ecological project for residents of Otatara and Otatara and Invercargill schoolchildren to be involved in.

The project will progressively turn the area of exotic grasses into a functioning, self-sustaining native ecosystem with features and educational opportunities that can be enjoyed by the public of Otatara and Invercargill for the future.

The project is managed by the Committee of the Otatara Landcare Group, an Incorporated Society established in 1999.

### **The Mission Statement of the Otatara Landcare Group is:**

- **To focus attention of Otatara residents and others on the natural features and ecological values of the Otatara environment, especially native forest and wetland flora and fauna.**
- **To promote and, where possible, facilitate the protection, restoration and creation of such features in the interests of scientific appreciation and intrinsic worth and to encourage community appreciation of these values.**

## **2. Administration**

- Annual Plan completed for 2012/13
- Annual accounts separate Bushy Point income and expenditure. Audited accounts to 31 March 2013 presented to the OLG AGM on 23 May 2013.
- Funding application submitted to Fonterra, as well as submissions to Invercargill City Council and Environment Southland.
- Landcare Groups Networking Day – 50 people, hosted by Otatara Landcare Group and Southland Community Nursery – 15 March 2014.
- Continued dialogue with Invercargill Rifle range, DOC and ICC over the “No Danger Zone” initiative.

## **3. Caretaker**

- Caretaker Barry Smith spent 193 hours working at Bushy Point during the year
- Main jobs included: plant area maintenance, releasing and weed control, tree planting, supervising balage and fertiliser application, track maintenance, preparation for Living Legends planting – positioning plants, track preparation, post hole digging, toilet arrangement and activity on the day etc
- Liaison with landowners, grazers, Invercargill Rifle Range, DOC, Local Authorities, schools, report writing and funding for lawn tractor.

- Caretaker Barry has been a key figure in ensuring the new initiatives have been successful and key ongoing management tasks and liaison is undertaken.

#### **4. Restoration**

- Plant maintenance and weed control continued.
- Schools Planting day for Living Legends 23 August 2013 - Otatara School 29 children & 9 Adults. James Hargest High School 10 children & 1 Adult. St Theresa's School Bluff 25 Children & 10 adults.
- Living Legends main planting public day – Saturday 24 August 2014 - 150 people attended.
- Preparation blanket spraying of Living Legends 2013 area by contractor and release spraying of the previous years plants.
- Maintenance of the Living Legends 2012 area plants planted in September 2013.
- Growing of 1000 Living Legends plants by Linda and Ray Jackson at the Community Nursery
- Combi-guard plant covers bought and used to cover plants for rabbit control.
- Five Minute Bird Surveys by Lloyd Esler undertaken every 3 months
- Environment Southland continued insect monitoring with weta motels.
- Rat and Mustelid monitoring continued at Bushy Point.
- A monthly calendar of working bees and events was instigated by Sally Duston and has successfully introduced new people to Bushy Point.

#### **5. Animal Pest Control and Monitoring**

Continued intensive pest control operation continues taking in the whole of Bushy Point area (90 hectares). The rat, mustelid and possum control at Bushy Point is aimed at protecting the nesting fernbirds, kereru, tui and bellbirds as well as other birds, lizards and insects and plants.

- Maintained 8 trap lines through Bushy Point covering over 6 kilometres of track, containing - 90 rat bait stations 49 possum traps, and 14 stoat traps. Bait stations are set at 50 metre intervals along each track.
- Approximately 400 voluntary hours spent on pest control in 2013/14 by Ian Gamble, Sally and Gordon Duston, Kirsten, Kennedy Family, and Darren May.
- Trap lines continue to be serviced on average every second week by volunteers with the following result since start of trapping. Although possums have been markedly reduced, stoats continually reinvade and rat poison continues to be taken.

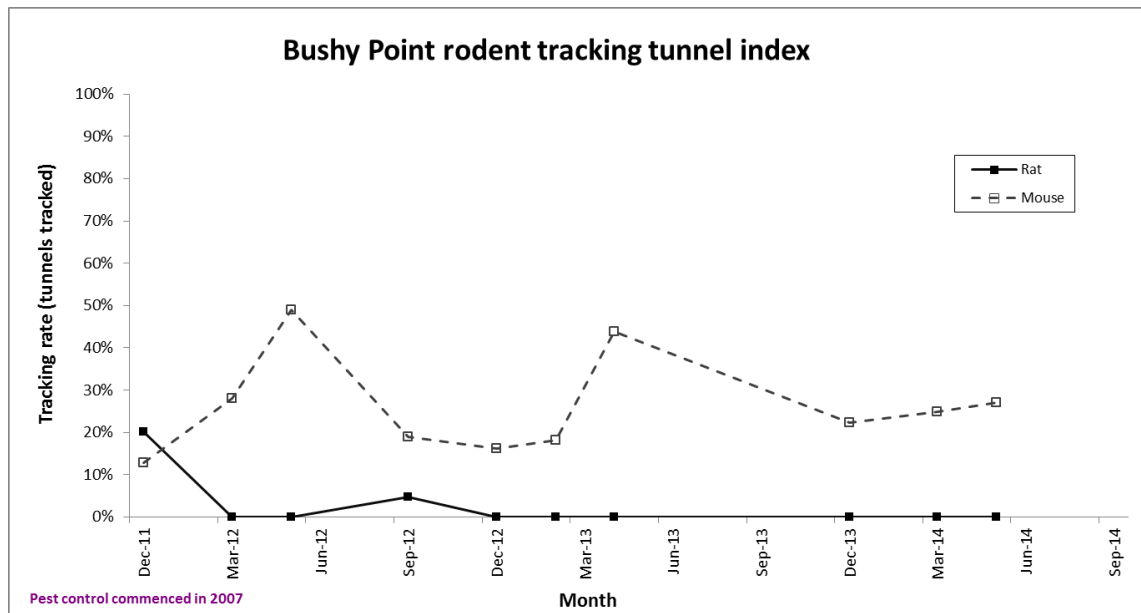
Possums caught by calendar year were as follows (note 2014 up to March 2014):

Possum Count of Catch	Year								Grand Total
	2007	2008	2009	2010	2011	2012	2013	2014	
Total	99	74	26	17	17	10	6	7	256

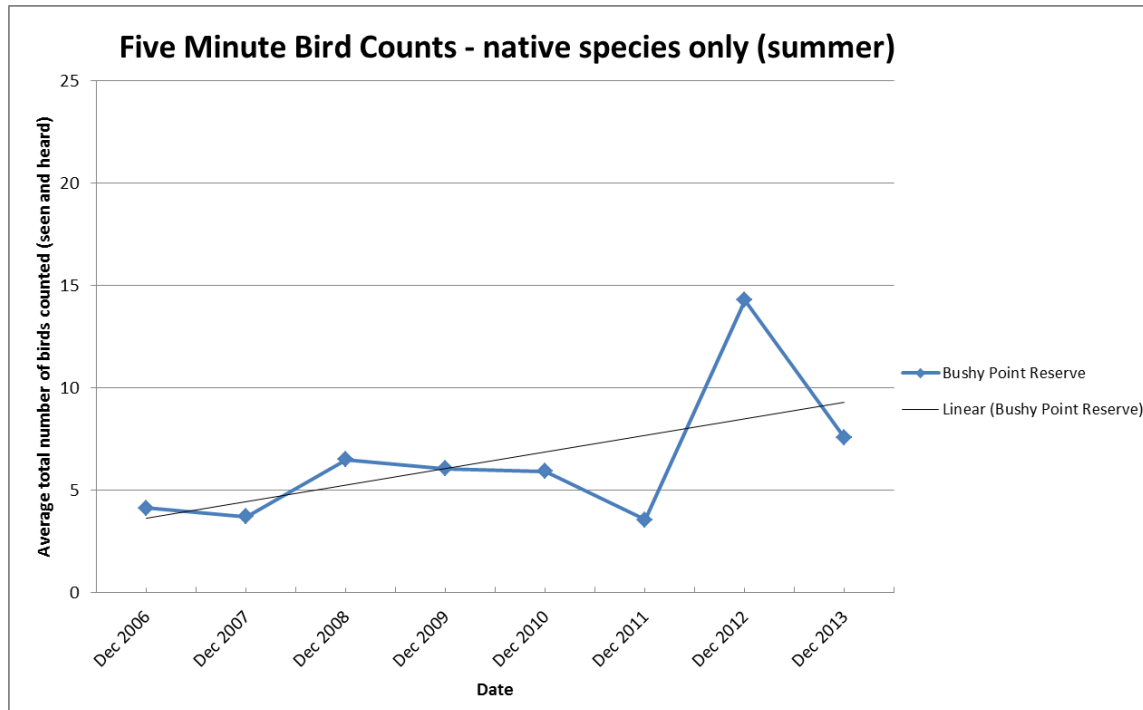
Mustelids caught by calendar year were as follows (note 2014 up to March 2014):

Count of Catch	Year								Grand Total
	2007	2008	2009	2010	2011	2012	2013	2014	
Ferret					1				1
Stoat Adult Female	1	1	5	2	2	1	4	1	17
Stoat Adult Male	2	3	2		3	1	6		17
Stoat Juvenile Female								2	2
Stoat Unknown	10	9	11	8	1	9	6	2	56
Weasel	1	3		1	1	1	2		9
Grand Total	14	16	18	11	8	12	18	5	102

- Statistics and maps can now use 7 years of data to establish trends in bait take and trap catch at Bushy Point. Information on trapping is collected in the form of spreadsheets and this information is available for further analysis.
- Rat, mouse and stoat monitoring by Environment Southland continued with the results below.



- Lizard artificial covers, weta motels and seedfall traps are still in place but monitoring by Environment Southland has ceased.
- Bird count stations have been set up and are monitored by Lloyd Esler for Environment Southland every 3 months. These counts are done in association with Mores Reserve, Bluff Hill, and Omaui Reserve.



### *“Bushy Point”*

Native bird numbers have not shown much change during the first six years of monitoring but have sharply increased from an average of around 5 birds per listening station to 13.5 in summer 2012 (Fig. 3). Last summer’s count was significant lower but with an average of around 7.5 birds per listening station still higher in the first six years. The total number of native bird species recorded has been between 7 and 9 since five minute bird counts commenced (Ref Annual Report – Five Minute Bird Count monitoring 2013/14 Robert Schadewinkel).”

- Although the bird results will take years to show meaningful trends there have again been some interesting observations by a number of people:
  - Bittern seen at Gambles on a number of occasions.
  - Fernbirds abundant and appear to be extending territories – regularly seen on Rances pond and in the Bushy Point restoration area (it would be good

to establish bird count stations in the restoration area as there were none set up in this area at establishment)..

- Spoonbill and kingfishers seen at Bushy Point Pond.
- Flock of brown creepers regularly seen on JKL lines and at Rances
- Morepork heard May 2013 at Rances
- Scaup nesting at Rances 2013 for the first time in 20 years

Thanks to Derek Richards, Amy Rush and Robert Schadewinkel and Richard Bowman Environment Southland and Colin Bishop Department of Conservation for ongoing support and advice with pest control.

### **Wider Otatara Pest Control – Otatara Pestbusters**

Otatara Pestbusters (encouraging pest control on private land by their owners), was continued throughout 2013/14. This project (a sub-group of the Otatara Landcare Group) steered by Russell and May Evans has now gained 128 email members doing pest control. The project builds on the 90 hectares of control at Bushy Point and has been supported by Environment Southland and Invercargill City Council funding which has enabled the group to supply traps and bait at a subsidised price. Each person actively engaged in pest control receives a letterbox sign and regular newsletters.

In 2013/14 Invercargill City Council Reserves have been brought into the Pestbusters and traps are being serviced by volunteers in those locations.

In 2012 negotiations began to include Otatara South Scenic Reserve into intensive pest control. Department of Conservation funding has ensured that this reserve has been intensively trapped for possums, stoats and rats in 2013/14. Thanks go to local resident Peter Simpson for spearheading the pest control in Otatara South Scenic Reserve – supported by Pestbusters, in particular Russell and May Evans.

## **6. Weed Control**

- Gorse, broom and blackberry control continued.
- Weed control of entranceway continued.
- Release spraying of Living Legends 2011, 2012 and 2013 plants – by contractors.
- Hand weeding of plants by volunteers each month – organised by Sally Duston.
- Organisation of 2013 Living Legends planting in a grid to be “mowed” to enable weed control between plantings.
- Blanket spraying of areas in preparation for Living Legends 2014 planting – by contractor.
- Broom gall mites (*Aceria genistae*) were released as a biocontrol for broom at Bushy Point in March 2012. They have established but are not present in high numbers yet. One mite infested bush is clearly affected by the gall mites feeding on it - the most infested side has few leaves and almost no flowers, while the side of the bush with no galls is still relatively healthy (although another biocontrol agent, the twig miner moth has caused some damage). It is still early days yet for this site, but mites at older sites in Southland have already succeeded in killing substantial broom

bushes (one over 2m tall and 10cm in diameter).

Other broom biocontrol agents present at Bushy Point are broom psyllids, twig miner moths and broom seed beetles. All of these agents have been carefully tested to ensure they have a very specific host, exotic broom (*Cytisus scoparius*).

In addition to the broom agents, gorse soft shoot moths were released at Bushy Point last summer and will be monitored for the first time in December. The larvae of this moth feed on new the growth produced in early summer, helping to stunt the gorse's development and reducing the amount of flowers produced on the damaged shoots.

Additional information about biocontrol can be found here on the Landcare Research website:  
<http://www.landcareresearch.co.nz/publications/books/biocontrol-of-weeds-book>

- Bushy Point is a national “Weedbusters” site.

## **7. Infrastructure**

- Bushy Point Track mowed as required, track improvements made.
- Track around pond created.
- Posts and track markers for self-guided activity trail
- Posts for new track alignment and interpretation

## **8. Interpretation and public access**

- The Bushy Point walkway continues to be used by individuals and groups.
- Living Legends planting with 83 people at the schools event and 150 people attending main public planting day 23-24 August 2013.
- New nature track and educational activities completed 2013.
- Doggy do bags provided at the entrance to the Bushy Point Track.
- Public walkways were maintained and used.
- Geocaches including a multi geocache were placed in Bushy Point in 2014

## **General Information and Advocacy**

- Otatara Pigeon Post Newsletter published
- Welcome to Otatara packs delivered to new residents
- Hosted Tacoma School, Washington State 17 February 2014, Southland Girls High School year 7 two day visit 11-12 March 2014.

## **9. Volunteers and Public Involvement**



- Number of hours for the year – 1593 hours (over 9725 hours in total for the project).
- School visits – Southland Girls High School and Tacoma School USA. School planting day for Living Legends 23 August 2013 attended by pupils from Otatara School, James Hargest and St Teresas Bluff .
- Southland Girls High School Break out days 11-12 March 2014.
- Average of 10 people per monthly working afternoon
- 8 Pest lines (over a 90 hectare area) maintained every 2 weeks by a group of dedicated volunteers.
- A range of “small jobs” (tool sharpening, track work, weed control) put out on email for people to do in their own time, with good results.
- A Family Day was organised on 2 March 2014 but was poorly attended due to very bad weather.
- Geocaching event – September 2013 – 10 people
- Orienteering event February 2014 – 60 people

## **10. Grazing/pasture management**

- Horse grazing has continued in 2013/14.
- No sheep grazing but balage taken off.
- Income from horse grazing and balage was \$4340.90

## **11. Funding**

Successful funding applications were submitted to:

- Living Legends Project for 2013/14 – \$13,312.50 for plants at Bushy Point
- ES Pest Control funding \$1500 including Pestbusters Otatara South.
- ICC Pest Control funding \$2000 including Pestbusters Otatara South
- Fonterra Grassroots Grant of \$1500

## **12. Expenditure and Income**

- General expenditure for Bushy Point 2013/4 was \$9942.99
- Public Liability Insurance was \$664
- Living Legends paid \$13768 for plants for 2013 planting year 3
- Weed control expenses were paid directly by Living Legends
- Pest Control Expenses were \$7172.63
- Total grazing and balage income for Bushy Point 2013/4 was \$4340.92
- Total grant income for Bushy Point 2013/14 was \$5000 plus \$13312 Living Legends.
- A grant of \$4833 was gained for Pest Control Otatara South Scenic Reserve.

## **13. Key Tasks for 2014/15**

- Preparation for Living Legends Event - Planting Date – August 2015 – 1000 plants.
- Release spraying 2012 Living Legends plantings
- Release spraying 2013 Living Legends plantings
- Release spraying 2014 Living Legends plantings
- Preparation spraying for 2015 Living Legends plantings
- Release spraying previous 13 years of plantings
- Continued track maintenance
- Continue to work with schools at Bushy Point, in particular Southland Girls High School, Otatara School, James Hargest and other schools for Living Legends School planting.
- Weed control particularly gorse paddock and broom on boundaries
- Maintain all pest lines every 2 weeks from spring, employ pulsing of bait.
- Continue work to extend pest control over wider Otatara area
- Work with Invercargill City Council on extending the estuary bikeway to the Otatara side of the estuary.
- Pursue the “No Danger Zone” Rifle Range initiative with Department of Conservation, Invercargill City Council and Rifle Range Club.
- Continue Otatara Pestbusters initiative as this will reduce pest invasion into Bushy Point.
- Submit funding application to DOC’s new Community Conservation Partnership Fund.
- Continue with the monthly calendar of events

#### **14. Acknowledgements**

Thanks to the Department of Conservation, Environment Southland, Invercargill City Council, Funding Agencies, surrounding landowners and volunteers for their efforts in making 2013/14 another very busy and successful year for the Bushy Point Restoration Project.

**Barry Smith**

**Chair**

**Otatara Landcare Group**

**3 November 2014**

# GREEN Living

## Southlanders in action in the outdoors

### Legendary effort achieved at Bushy Point

BY JANETTE GELLATLY

DURING the past three years, 170,000 native shrubs and trees have been planted in 17 locations throughout New Zealand to honour 17 rugby living legends.

Southland's Living Legend, former All Black Kevin Laidlaw, members of the Otago Landcare Group, volunteers and family groups helped dig in 3500 plants at Bushy Point recently to conclude the three year project.

The previous day, school children from Invercargill's James Hargest College, St Teresa's in Bluff, and Otago School began the weekend's planting by digging in a few hundred plants.

Holes had been pre-dug in preparation for the annual community planting day to quicken the planting process.

The Living Legends project was initiated in 2011 to leave a living legacy of New Zealand's hosting of the Rugby World Cup.

Although this is the final year of the nationwide project, the Otago Landcare Group intends to continue planting natives each year.

It has been managing the 14ha

reserve under an agreement with the

Department of Conservation since

2000, and has been restoring the weekend's efforts, 11,380 native grazed land into a self-sustaining eco-plants have been planted at Bushy Point.



**Legendary:** Living Legends director Devon McLean helps Narissa Diack (left) and Nick Mason (both 10) of Otago School plant a native tree recently as part of the Living Legends project at Bushy Point.



**Digging in:** Otago Landcare Group members and volunteers participate in the Living Legends planting day at Bushy Point. With the holes pre-dug and the trees placed, volunteers had to remove each tree from its bag, plant it, fill in the hole after fertiliser was added and then stamp the soil back into place. The trees then had matting put around the base and a plastic sleeve put over the top to deter rabbit nibbling. **Left:** Otago resident Lily Miller about to put the sleeve on one of her plants.



Photos: Lloyd Esler



## Living Legends 2013





Volunteers were at Bushy Pt, Otatara, on Saturday, planting 3500 native trees. The day of tree planting marked the end of two years of hard work for the Otatara Landcare Group and volunteers. The group has taken part in the living legend scheme for the past two years - a conservation programme set up to leave a 2011 Rugby World Cup legacy by planting trees nationwide. The group planted more than 11,000 trees at Bushy Pt in total, with 170,000 trees planted nationwide since the World Cup. **John Hawkins** was there to capture the workers in action.



Devon McLean, Girl Guide Sophie Junghenn, 10, and rugby legend Kevin Laidlaw muck in to plant trees at Bushy Pt, Otatara, on Saturday.  
Photo: 628333333



Daniel Jackson and 5-month-old Sidney at the living legends muck-in.  
Photo: 628333337



Haim Haviv and son Abram, 2, with ranger Philippa Christie at the tree planting day.  
Photo: 628333338



## Living Legends Planting Area 2013



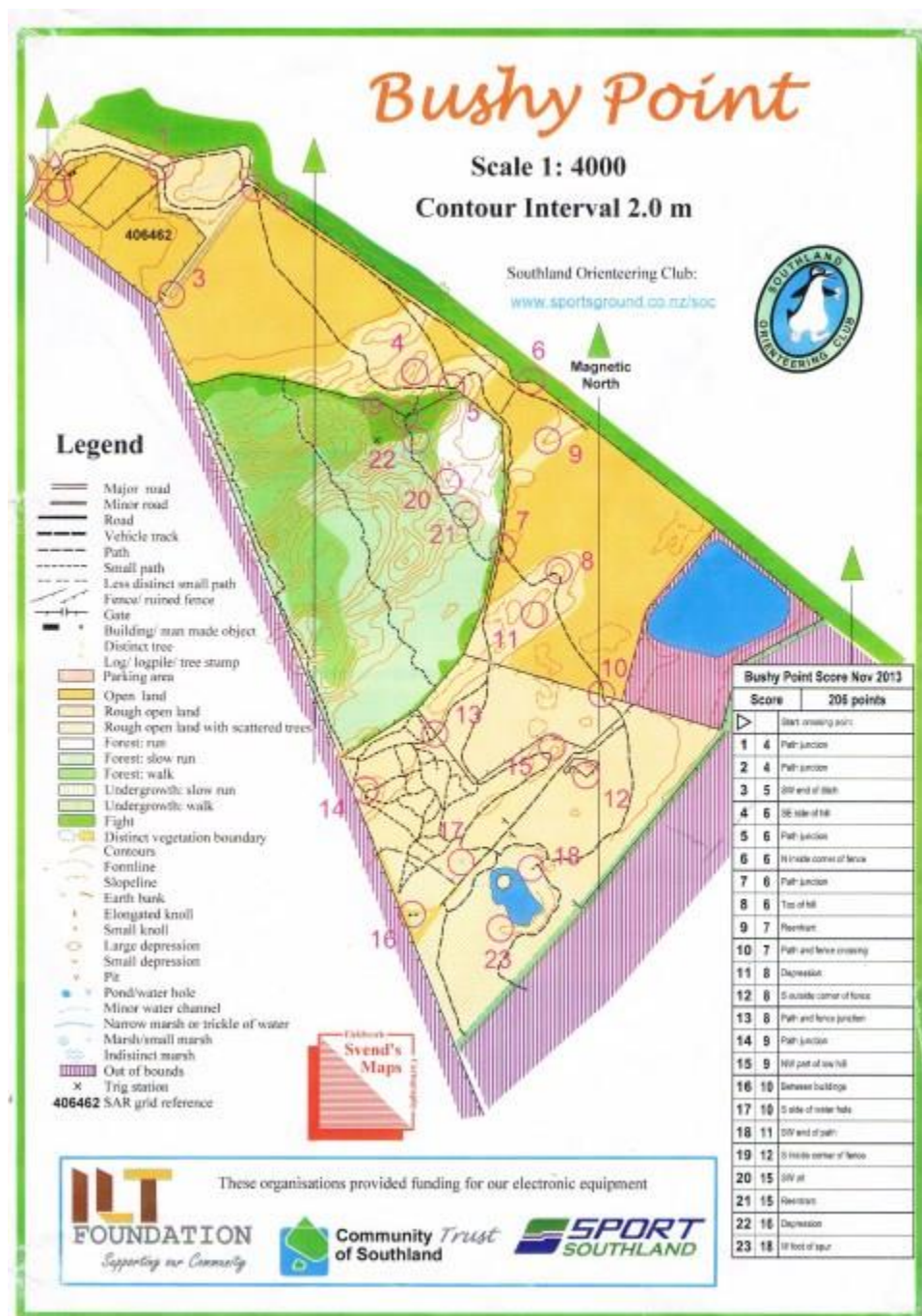


## Landcare Groups Networking Day



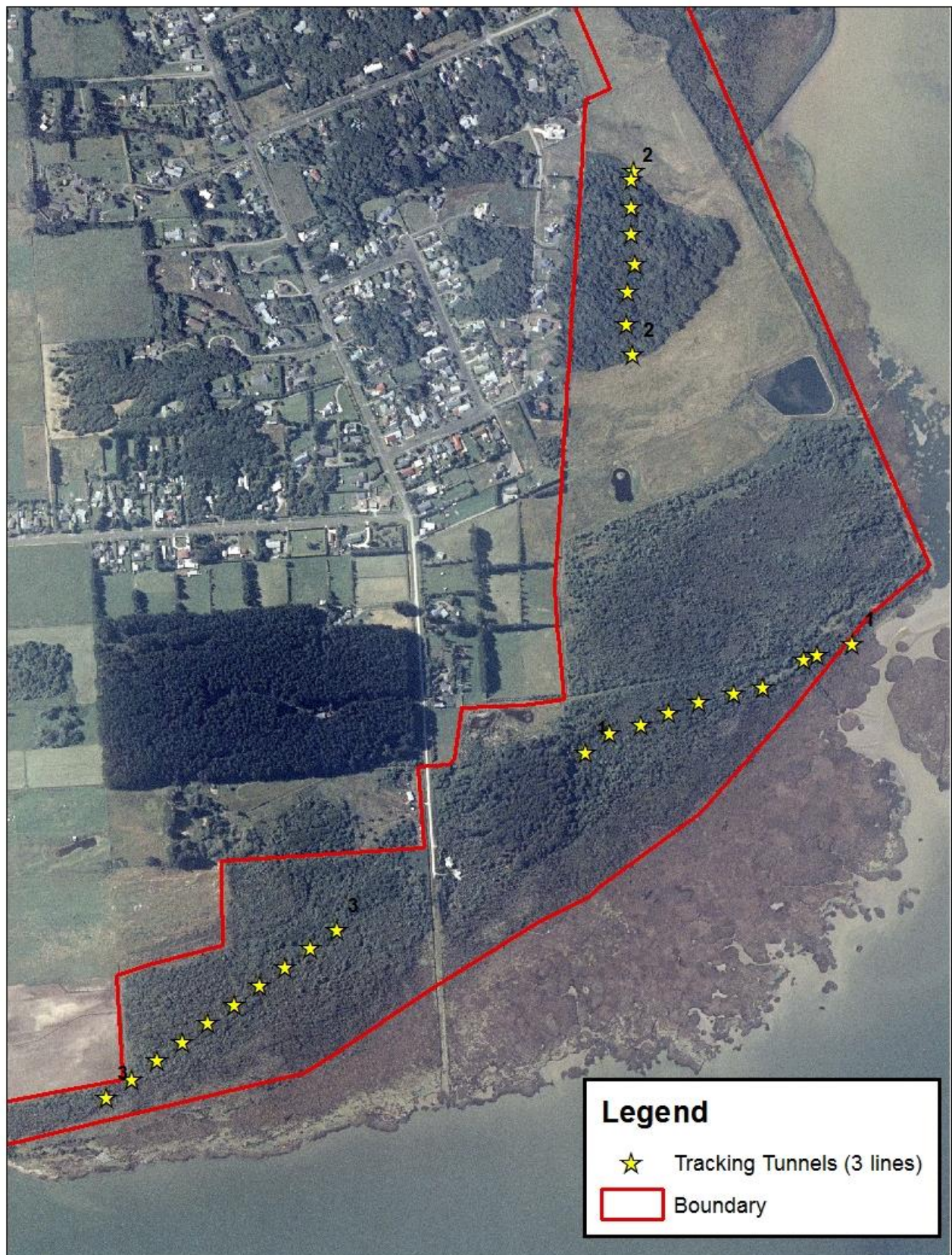
## Orienteering

- An exciting new chapter opened for Bushy Point Reserve in February 2014 when the OLG joined forces with the Southland Orienteering Club to hold an event there. A new map was drawn up for the occasion with co-operation from a member of the OLG, ICC and SOC and a Score Event was planned. This involved the placing of about 30 'controls', each allotted points, and which competitors had 60 minutes to find using sportIdent, the electronic equipment and programme used to record which controls have been visited.
- At least 60 people, local and from further afield, turned up - along with a very generous sprinkling of dogs. It was a perfect way to introduce people, outside of the immediate Bushy Point area, to the delights of our lovely reserve. More events are planned for the future.





## Rodent Monitoring lines at Bushy Point





# Map of Bird Count Locations at Bushy Point 2013/2014





## **Weed Control - Broom Gall Mite**

**Images (by Jesse Bythell):**



**BGM\_Bushy\_Point\_2014\_1 - gall mite infested bush at Bushy point - note the lack of leaves and small newly developing gall in the centre.**



**BGM\_Bushy\_Point\_2014\_2 - the healthier side of the same bush (with some twig miner moth scarring from last summer's larval feeding)**

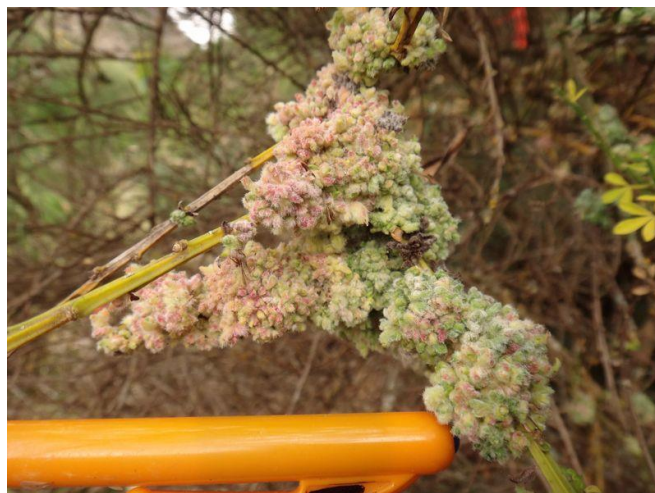


**Gorse soft shoot moth damage**



**GSSM\_Mossburn\_Gallagher Rd - gorse soft shoot moth larva**

**Large gall containing multiple generations at Nokomai Station**





# New Colour Bushy Point Track Leaflet

## Bushy Point – a place of history

This walk provides an insight into Otatara as it used to be. It highlights some current activities and introduces the restoration project that is progressively restoring paddocks back to native forest and wetland. The land is public conservation land managed by the Otatara Landcare Group.

### Walking Times

One-way from Bryson Road at a leisurely pace:

- To viewpoint – 10 minutes
- To pond and interpretation sign – 30 minutes



### Learn more about Bushy Point

Follow the yellow-topped numbered posts. You'll find interesting information in this brochure specific to each site.



Once you've reached the interpretation sign by the pond, pick up another brochure for our 'Super-sleuth' walk. Follow the fantail numbered posts.



## About the Otatara Landcare Group

For more information see our website:  
[www.otataralandcare.org.nz](http://www.otataralandcare.org.nz)

Or contact:

Barry Smith Ph: 213 1500  
Chris Rance Ph: 213 1161

This project would not be possible without generous financial and material support.

In particular, contributions made by:

- Department of Conservation
- Environment Southland
- Community Trust of Southland
- Invercargill City Council
- National Parks and Conservation Trust (Transpower)
- ILT Foundation
- Pub Charity



### Learning activities

See our website for more fun activities you can enjoy while walking at Bushy Point or at your place: [www.otataralandcare.org.nz](http://www.otataralandcare.org.nz)

**Please return this brochure to the dispenser for other walkers to enjoy – thank you!**

## BUSHY POINT

past, present, future

### A self-guided walk



### 1. Pest Control.

Introduced animals harm both native plants and wildlife. A study of Otatara's tui and pigeons showed that 86% of their nests were attacked by predators.

Distinctive pink triangles mark pest control traps on lines that have been cut into the bush areas at 100 metre intervals. This is one of several kinds of traps used to catch offenders. So far 250 possums, 90 stoats and a few weasels have been caught. Many rats have also died after taking poisoned bait from bird- and pet-proof tunnels.

Three monthly bird counts test the programme's success and locals are noticing more bird song.

### 2. Check out the view.

The white trig structure on the hill marks one of Invercargill's high points, 20 metres above sea level. The rolling hills are all that remain of sand dunes which date from the stabilisation of sea levels after the last ice age some 6,000 years ago. Most of the dunes were levelled around 1910 with sand used as fill to create the embankment that carried a tramway across the estuary from Stead Street to Otatara. The work was done using prison labour.

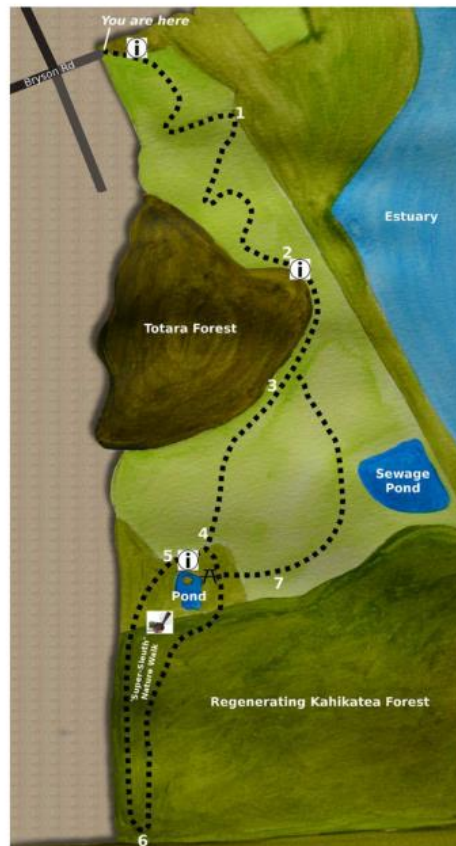
The estuary is fringed by salt marsh. Jointed wire rush or oiwi dominates the tidal zone then gives way to coastal scrub, including cabbage tree (ti), manuka and flax (harakeke). Listen for a short metallic 'tchick' which gives away the presence of rare fernbirds.

### 3. Totara forest remnant.

A remnant of totara forest still covers sand dune hummocks in this small area. The big totara have been milled, leaving behind younger trees mixed with kohuhu (*Pittosporum tenuifolium*) and peppertree (horopito) amongst introduced scrub plants.

### 4. Living Legends.

In September 2011 the Living Legends Project started with 250 volunteers planting 5,300 native plants. The three year Living Legends project was sponsored by the Tindall Foundation.



Since the year 2000, volunteers have planted over 20,000 native plants at Bushy Point – a forest in the making!

### 5. Creating a Pond.

In September 2006 a pond and wetland area was created. The pond margin features flax, sedges and scattered shrubs, including thickets of *Coprosma* to attract fernbird. As planting extends outwards, it will provide a vegetation sequence from the pond to adjacent wetland and podocarp forest. The wetland is already attracting waterfowl, white-faced heron, black shag, little shag and kingfisher.

From here you can follow the numbered fantail signs. Pick up a brochure by the interpretation sign and have a go at some fun activities along the way.

### 6. Views of the original forest.

From here you can look south to see tall kahikatea, matai and rimu – a reminder of the original podocarp forest that once covered much of Otatara.

### 7. Get involved – how you can help

From here you are looking over the 2013 Living Legends plantings.

The Otatara Landcare Group volunteers now have over 20,000 native plants to look after at Bushy Point.

If you can spare some time on our regular work days or take on a small job in your own time, we would love to hear from you! See our Calendar of events or contact us through the website:

[www.otataralandcare.org.nz](http://www.otataralandcare.org.nz)



Living Legends  
planting 2013



# Bushy Point Educational Trail leaflet



## Have a go at our fun activities

Print out the activity cards from our website: [www.otataralandcare.org.nz](http://www.otataralandcare.org.nz)

### 1. Who did that?



Put your detective hat on - use our 'who did that?' cards. Start with the flax bush in front of you. What is making the holes in the leaves? What else can you find? Keep looking while you walk the loop track.

### 2. Pest Station

Here are two examples of traps (not functioning!). What do you think they are used for? What pests do we find in Otatara?

### 3. Colour Match

Can you match our colour cards to plants and leaves along the track?

### 4. Bugs!

Can you find our 'weta motel'? Is anyone 'home'? Lift logs and leaves - what other bugs can you find?

### 5. Plants 'out-smarting' moa

There's a special tree growing here that's adapted to 'out-smarting' moa! Can you find the juvenile trees? (They have long lance-like leaves). Can you see the adult tree? How high do you think moa could reach?

### 6. Plant uses - Wineberry vs Elderberry

Which one is native and which is introduced? Do you know what they look like? Both have flowers and fruit but we can use them in different ways. Find out how you can make cordial or even wine from elderberry flowers.

### 7. Forest Layers and Ferns

Notice how the trees here are quite tall. The shady areas under them are perfect for plants like astelias (they look a bit like flax) and ferns. How many ferns can you find? Did you know we have about 200 different kinds of native fern in New Zealand - many found nowhere else in the world!

### 8. Leaf Bingo

Use our Leaf Bingo cards to see how many native trees you can find. Look for differences in leaf size, shape and texture.

### 9. Weeds

What makes a plant a weed? How many different weeds can you see here? Did you know that some native plants can be weeds too when they are growing in the 'wrong' place - for example muehlenbeckia can grow over and smother other native plants.

### 10. Bird Squeaker

This is a great place to look for birds. Use your bird squeaker or rub some polystyrene on the glass bottle. What birds can you see?

### 11. Stop and enjoy a picnic!

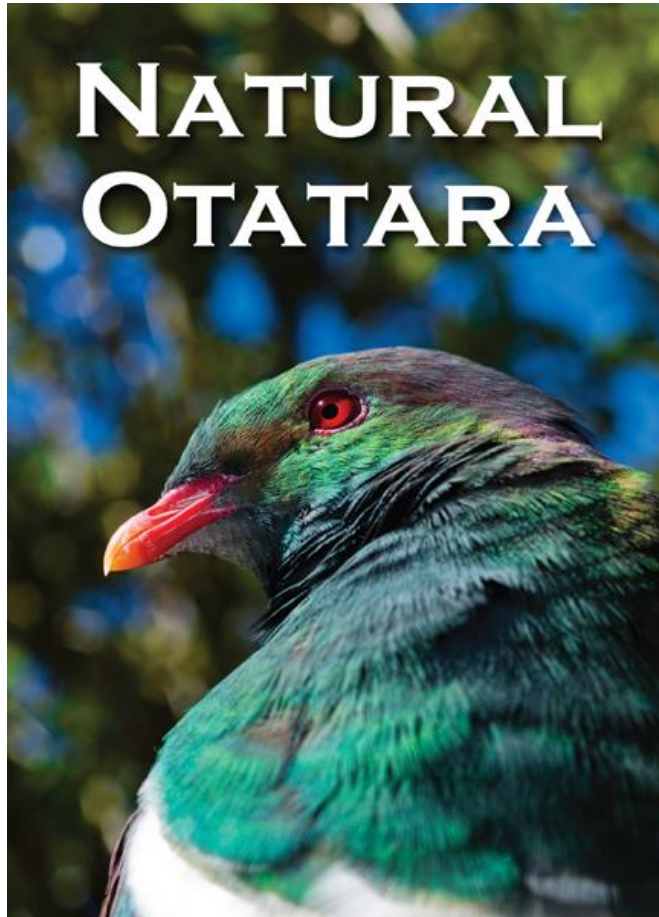
### 12. A forest in the making

Look at the forest growing around you. Some trees are not very big yet but they are the forest of the future!





# General Advocacy - Natural Otatara Booklet, Kereru Road Signs, Otatara Pestbusters, Otatara Pigeon Post Newsletter



## PIGEON POST Issue 50 October 2014

Hello folks, welcome to Pigeon Post, the newsletter of the Otatara Landcare Group. In this newsletter we bring you news of the latest happenings in our area and snippets of information about our past and ideas about improving our environment

**Your committee:** Chairman Barry Smith 2131500

Secretary Chris Rance 2131161 Treasurer Glenda Graham 2131397

Please contact the Otatara Landcare Group if you have questions, ideas or problems relating to the Otatara and Sandy Point areas.

**Chairspeak** – a message from Chairman Barry Smith.

Greetings to everyone. There has been a great deal of excitement in the Otatara Landcare Group in recent months.

Firstly we have achieved a milestone (funny still calling it a milestone when we converted to kilometres many years ago, but kilometrestone doesn't quite have the same ring to it....) Anyway, the milestone we have reached (although not quite yet we will have achieved it by the time you receive this newsletter) is the 10,000 hours that volunteers have put into the Habitat Restoration project at Bushy Point. This is a fantastic effort and everyone can be proud of the work done to date. By my calculation it took us 15 years to reach this point and 25,000 plants have been put in the ground, so there is probably only about 30,000 hours to go..... and possibly another 45 years (gosh! I'll be 94) so keep up the good work.

Many of you will know we had a bit of a celebration at the Otatara Community Centre to mark the occasion. We had about 50 people attend our Haggis, Neeps and Tatties. The haggis was piped in and addressed and we all ate our fill. For those of you who don't know what all of this is, the haggis now-a-days resembles (and tastes) more like a spiced and herbed sausage with grains etc added. The Neeps is mashed swede and the tatties is mashed spud.

Just pondering this milestone vs kilometrestone business. If the milestone is 10,000 hours and a kilometre 5/8 of a mile then a kilometrestone must be 6250 hours..... (we passed that years ago!)



### The new Tractor

We were recently fortunate enough to get a generous grant of over \$13,000 from The Southern Trust. This was for the purchase of a new tractor/mower for scrunching up the broom, lupin and gorse. Here Ray Jackson demonstrates its versatility and manoeuvrability as he steers it between plantings. This replaces Barry Smith's ancient mower which did good service for many years but finally succumbed to



# Otatara Landcare Group Events – 2013

**All events are free of charge!**

<b>MARCH</b> <b>Friday 1, 8, 15, 22</b>	<b>Southland Community Nursery, 185 Grant Road, 9am-Noon.</b> Enjoy like-minded company, involving all aspects of native plants – weeding, collecting seeds and cuttings, potting. Good morning tea, bring something yummy! For more information contact Chris Rance, ph 213 1161 or just turn up – all welcome!
<b>Sunday 17</b>	<b>Bushy Point Work Day, 1pm-3pm.</b> Meet Bryson Road entrance – bring the family! Weeding and placing plant protectors. For more information contact Sally Duston, ph 213 1403.
<b>Monday 25</b>	<b>Otatara Bike To Work Day.</b> On your return collect FREE book 'Natural Otatara' or native tree voucher in the Wetlands Liquor car park, cnr Dunns Rd/Marama Ave 5th, between 4pm-6pm. For more information contact Sally Duston, ph 213 1403.
<b>APRIL</b> <b>Friday 5, 12, 19, 26</b>	<b>Southland Community Nursery, 185 Grant Road, 9am-Noon.</b> Enjoy like-minded company, involving all aspects of native plants – weeding, collecting seeds and cuttings, potting. Good morning tea, bring something yummy! For more information contact Chris Rance, ph 213 1161 or just turn up – all welcome!
<b>Saturday 6</b>	<b>Native Plant Sale &amp; Open Day – Southland Community Nursery, 2pm-4pm</b> For more information contact Chris Rance, ph 213 1161.
<b>Sunday 21</b>	<b>Bushy Point Work Day, 1pm-3pm.</b> Meet Bryson Road entrance. Bring the family, gloves and clippers. Weeding and track maintenance. For more information contact Sally Duston, ph 213 1403.
<b>MAY</b> <b>Friday 3, 10, 17, 24, 31</b>	<b>Southland Community Nursery, 185 Grant Road, 9am-Noon.</b> Enjoy like-minded company, involving all aspects of native plants – weeding, collecting seeds and cuttings, potting. Good morning tea, bring something yummy! For more information contact Chris Rance, ph 213 1161 or just turn up – all welcome!
<b>Sunday 12</b>	<b>Know Your Native Trees Quiz, 1pm-3pm</b> Otatara Reserve, Dunns Road. For more information contact Sally Duston, ph 213 1403.
<b>Sunday 19</b>	<b>Bushy Point Work Day, 1pm-3pm</b> Bryson Road entrance - checking trap lines. For more information contact Sally Duston, ph 213 1403.
<b>Thursday 23</b>	<b>Otatara Landcare Group AGM, Otatara Community Hall, Dunns Road, 7.30pm</b> All welcome – meeting to be followed by a walk <i>Creatures Of The Night</i> – bring a torch. For more information contact Chris Rance, ph 213 1161.
<b>JUNE</b> <b>Monday 3</b>	<b>Evening Talk, Otatara Community Church, 46 Oreti Road, 7.30pm</b> Weeds and Other Undesirables of Otatara! Also a quiz and raffle. Bring along any plant for identification. For more information contact Sally Duston, ph 213 1403.
<b>Friday 7, 14</b>	<b>Southland Community Nursery, 185 Grant Road, 9am-Noon</b> Enjoy like-minded company, involving all aspects of native plants – weeding, collecting seeds and cuttings, potting. Good morning tea, bring something yummy! For more information contact Chris Rance, ph 213 1161 or just turn up – all welcome!
<b>Sunday 16</b>	<b>Bushy Point Work Day, 1pm-3pm</b> Bryson Road entrance. Tree protector preparation - bring the family. For more information contact Sally Duston, ph 213 1403.
<b>Friday 21, 28</b>	<b>Southland Community Nursery, 185 Grant Road, 9am-Noon</b> Cuttings workshop – learn how to grow native plants from cuttings. For more information contact Chris Rance, ph 213 1161.





<b>JULY</b> <b>Friday 5, 12</b>  <b>Monday 8</b>  <b>Sunday 21</b>	<b>Southland Community Nursery, 185 Grant Road, 9am-Noon</b> Enjoy like-minded company, involving all aspects of native plants – weeding, collecting seeds and cuttings, potting. Good morning tea, bring something yummy! For more information contact Chris Rance, ph 213 1161 or just turn up – all welcome! Nursery closed during winter, reopens 27 September 2013.  <b>Evening Talk – 49 Bryson Rd, 7.30pm</b> Pests and PestBusters of Otatara. Also a quiz and raffle. For more information contact Russell or May Evans, ph 213 0530  <b>Bushy Point Work Day, 1pm-3pm</b> Meet Bryson Road entrance – Living Legends tree planting preparation – bring the family! For more information contact Barry Smith, ph 213 1500.
<b>AUGUST</b> <b>Monday 5</b>  <b>Sunday 18</b>   <b>Friday 23</b>   <b>Saturday 24</b>	<b>Film Evening, 49 Bryson Road, 7.30pm</b> For more information contact Russell and May Evans, ph 213 0530  <b>Bushy Point Work Day, 1pm-3pm</b> Meet Bryson Road entrance – Living Legends tree planting preparation for next weekend – bring the family! For more information contact Barry Smith, ph 213 1500.  <b>Living Legends Schools Planting – Bushy Point</b> 3500 native trees to plant today and tomorrow! Register with Living Legends <a href="http://www.livinglegends.co.nz">www.livinglegends.co.nz</a> . For more information contact Barry Smith, ph 213 1500.  <b>Living Legends Family Day Planting – Bushy Point</b> For more information contact Barry Smith, ph 213 1500.
<b>SEPTEMBER</b> <b>Monday 2</b>  <b>Sunday 15</b>   <b>Friday 27</b>	<b>Evening Talk, 49 Bryson Road, 7.30pm</b> Digital Photographic Competition and your 5 pictures of 'The Moods of Bushy Point'. Also a raffle. For more information contact Sally Duston, ph 213 1403.  <b>Bushy Point Work Day, 1pm-3pm</b> Meet in car park at 183 Grant Road. Track maintenance – bring tools, gloves and the family! For more information contact Barry Smith, ph 213 1500.  <b>Southland Community Nursery, 185 Grant Road, 9am-Noon</b> Enjoy like-minded company, involving all aspects of native plants – weeding, collecting seeds and cuttings, potting. Good morning tea, bring something yummy! For more information contact Chris Rance, ph 213 1161 or just turn up – all welcome!
<b>OCTOBER</b> <b>Friday 4, 11, 18, 25</b>   <b>Sunday 6</b>   <b>Sunday 20</b>	<b>Southland Community Nursery, 185 Grant Road, 9am-Noon</b> Enjoy like-minded company, involving all aspects of native plants – weeding, collecting seeds and cuttings, potting. Good morning tea, bring something yummy! For more information contact Chris Rance, ph 213 1161 or just turn up – all welcome!  <b>Geocaches Of Otatara, Bushy Point, 1pm-3pm</b> Meet at Bryson Road entrance. Bring your Smartphone (with appropriate app) or GPS. Weed 10 trees and collect your FREE native tree voucher and details of the geocache sites around the Otatara Reserves. For more information contact Edith Jones, ph 213 1571.  <b>Bushy Point Work Day, 1pm-3pm</b> Meet at Bryson Road entrance. Weeding and tree maintenance – bring gloves and the family! For more information contact Sally Duston, ph 213 1403.
<b>NOVEMBER</b> <b>Friday 1, 8, 15, 22, 29</b>   <b>Sunday 3</b>   <b>Sunday 17</b>	<b>Southland Community Nursery, 185 Grant Road, 9am-Noon</b> Enjoy like-minded company, involving all aspects of native plants – weeding, collecting seeds and cuttings, potting. Good morning tea, bring something yummy! For more information contact Chris Rance, ph 213 1161 or just turn up – all welcome!  <b>Introduction to Basic Orienteering, Bushy Point, 1pm-3pm</b> For more information contact Sally Duston, ph 213 1403.  <b>Bushy Point Work Day, 1pm-3pm</b> Meet at Bryson Road entrance. Mixed bag...bring the family! For more information contact Sally Duston, ph 213 1403.
<b>DECEMBER</b> <b>Sunday 1</b>  <b>Friday 6, 13, 20</b>	<b>Mini Cross Country Events for Kids, Treasure Hunt and Family Picnic, Bushy Point, 11am</b> Bryson Road entrance – byo food etc – Bryson Rd entrance. For more information contact Sally Duston, ph 213 1403.  <b>Southland Community Nursery, 185 Grant Road, 9am-Noon</b> Enjoy like-minded company, involving all aspects of native plants – weeding, collecting seeds and cuttings, potting. Good morning tea, bring something yummy! For more information contact Chris Rance, ph 213 1161 or just turn up – all welcome!