

## **Bushy Point Restoration Project**

**Annual Report 2015/16**  
**(1 April 2015 – 31 March 2016)**



## **2015/2016 - Summary of Progress**

- **Otatara Landcare Group received a Trustpower Award for Bushy Point.**
- **Planned and managed with DOC and Environment Southland the Living Legends planting day – 30 people on the public planting day Saturday 12 September 2015.**
- **Planted 1200 locally grown native plants and covered with combi-guards for rabbit control.**
- **Maintained the previous 15 years plantings**
- **Managed major pest control operation (6km of trap network over 90 hectares) with volunteers**
- **Maintained entrance area and public walkway**
- **Continued weed control (particularly gorse)**
- **Continued grazing horses and balage management.**
- **SGHS Science students 10 and 17 November 2015**
- **Managed a calendar of monthly working afternoons for weeding, putting combi-guards on, track work, planting.**
- **Orienteering event 5 July 2015 held at Bushy Point.**
- **Reporting to DOC on major three year funding Community Conservation Partnerships Fund (CCPF).**
- **Supported Natural History Field Club Southland Bird Week 2-8 November 2015**
- **Eco-challenge event at Community Nursery and Bushy Point 13 December 2015**

- **Managed with Environment Southland the Southland Girls High School break out days with year 7 students – 21-22 March 2016.**
- **Otatara School planting at Bushy Point 21 March 2016**
- **Supported Mud-day out at Sandy Point – 2 April 2016**
- **Rifle Range Concession from DOC approved, signs erected at Bushy Point entrance.**
- **Supported two SIT students doing projects at Bushy Point – Sarah O'Neill and Phil Lockett.**

## **1. Aim of the Bushy Point Restoration Project**

The aim of the Bushy Point Restoration Project is to restore a 14 hectare area of rough exotic pasture between two remnants of nationally significant native totara forest to provide a habitat linkage for native birds and to enhance existing forest remnants and other ecosystems. Also, to raise public awareness of the importance of native forest remnants and to provide a practical long term ecological project for residents of Otatara and Otatara and Invercargill schoolchildren to be involved in.

The project is progressively turning the area of exotic grasses into a functioning, self-sustaining native ecosystem with features and educational opportunities that can be enjoyed by the public of Otatara and Invercargill for the future.

The project is managed by the Committee of the Otatara Landcare Group, an Incorporated Society established in 1999.

**The Mission Statement of the Otatara Landcare Group is:**

- **To focus attention of Otatara residents and others on the natural features and ecological values of the Otatara environment, especially native forest and wetland flora and fauna.**
- **To promote and, where possible, facilitate the protection, restoration and creation of such features in the interests of scientific appreciation and intrinsic worth and to encourage community appreciation of these values.**

## **2. Administration**

- Annual Plan completed for 2015/16 including compilation of trapping statistics
- Annual accounts separate Bushy Point income and expenditure. Audited accounts to 31 March 2015 presented to the OLG AGM on 25 May 2016.

- Submissions to Invercargill City Council and meeting with Environment Southland.
- Dialogue with Invercargill Rifle Range and DOC resulted in a DOC Permission over the “Danger Zone”.
- CCPF Funding Reporting costs relating to caretaker and tracks, pest control bait and replacement traps and interpretation, plants, covers and maintenance, project admin and public liability insurance, contribution to Bush Haven bird rehabilitation costs.
- Liaison with Southern Institute of Technology over two student projects carried out at Bushy Point.

### **3. Caretaker**

- Caretaker Barry Smith spent 100.7 hours working at Bushy Point during the year
- Main jobs included: plant area maintenance, releasing and weed control, tree planting, supervising balage and fertiliser application, track maintenance, preparation for Living Legends planting – positioning plants, track preparation, post hole digging, toilet arrangement and activity on the day etc
- Liaison with landowners, grazers, Invercargill Rifle Range, DOC, Local Authorities, schools, report writing and funding for lawn tractor.
- Caretaker Barry has been a key figure in ensuring the new initiatives have been successful and key ongoing management tasks and liaison is undertaken.
- Main user of the Mulcher Mower machine for track work, weed control and maintenance of Living Legends year 2 planting area.

### **4. Restoration**

- Plant maintenance and weed control continued.
- Living Legends main planting public day – Saturday 12 September 2015 - 30 people attended.
- Preparation blanket spraying of Living Legends 2015 area by contractor and release spraying of the previous years plants.
- Maintenance of the Living Legends 2014 area
- Growing of 1200 Living Legends plants by Linda and Ray Jackson at the Community Nursery
- Combi-guard plant covers bought and used to cover plants for rabbit control.
- Five Minute Bird Surveys by Lloyd Esler undertaken every 3 months funded by ES
- Rat and Mustelid monitoring continued at Bushy Point by ES.
- A monthly calendar of working bees and events was instigated by Sally Duston and has successfully introduced new people to Bushy Point.

### **5. Animal Pest Control and Monitoring**

Continued intensive pest control operation continues taking in the whole of Bushy Point area (90 hectares). The rat, mustelid and possum control at Bushy Point is aimed at protecting the nesting fernbirds, kereru, tui and bellbirds as well as other birds, lizards and insects and plants.

- Maintained 8 trap lines through Bushy Point covering over 6 kilometres of track, containing - 90 rat bait stations 49 possum traps, and 14 stoat traps. Bait stations are set at 50 metre intervals along each track.

Approximately 361 voluntary hours spent on pest control in 2014/15 by Ian Gamble, Chris Rance, Sally and Gordon Duston, Kennedy Family, Kirsten and Darren May.

- Trap lines continue to be serviced on average every second week by volunteers with the following result since start of trapping. Although possums have been markedly reduced, stoats continually reinvade and rat poison continues to be taken.
- The new CCPPF Funding has allowed replacement bait stations “pied pipers” to be purchased and laid out and replacement possum masters and DOC 200’s to be purchased, as well as paying for substantial rat and possum bait bills.

Possums caught by calendar year were as follows (note 2016 up to March 2016):

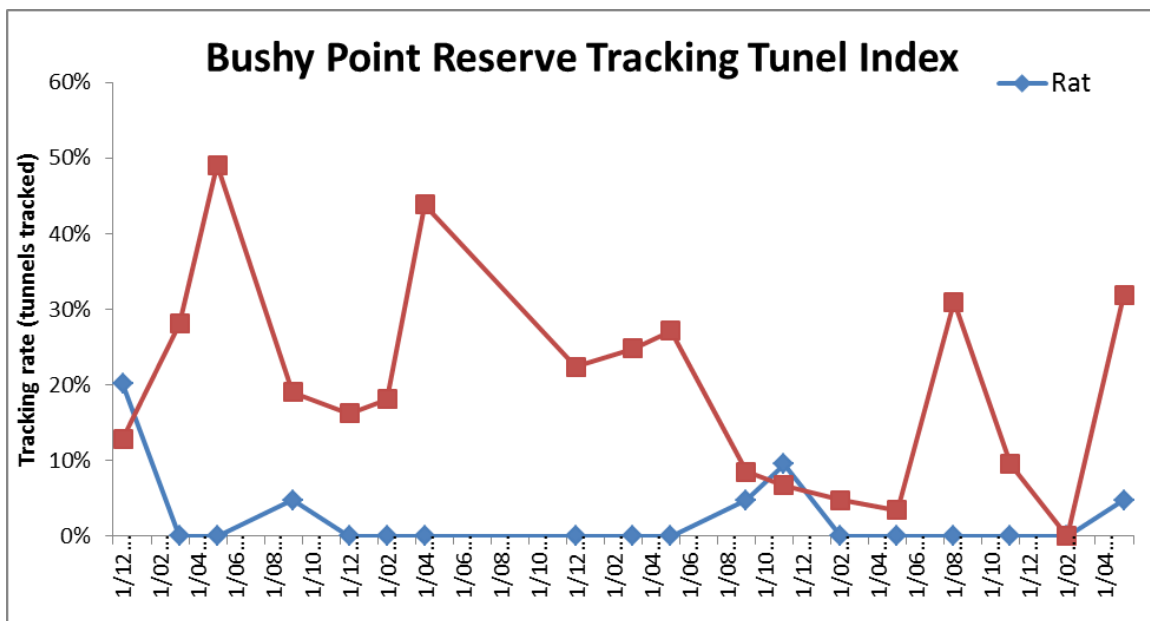
Possum Count of Catch	Year										
	2007	2008	2009	2010	2011	2012	2013	2014	2015	2016	Grand Total
Total	99	74	26	17	17	10	6	12	13	7	276

Mustelids caught by calendar year were as follows (note 2016 up to March 2016):

Count of Catch	Year										
	2007	2008	2009	2010	2011	2012	2013	2014	2015	2016	Grand Total
Ferret					1					1	2
Stoat Adult Female	1	1	5	2	2	1	4	1	3		20
Stoat Adult Male	2	3	2		3	1	6				17
Stoat Juvenile Female								2			2
Stoat Unknown	10	9	11	8	1	9	6	5	11	3	73
Weasel	1	3		1	1	1	2		1		10
Grand Total	14	16	18	11	8	12	18	8	15	4	124

- Statistics and maps can now use 9 years of data to establish trends in bait take and trap catch at Bushy Point. Information on trapping is collected in the form of spreadsheets and this information is available for further analysis.
- Rat, mouse and stoat monitoring by Environment Southland continued with the results below.





- Lizard artificial covers, weta motels and seedfall traps are still in place but monitoring by Environment Southland has ceased.
- Bird count stations have been set up and are monitored by Lloyd Esler for Environment Southland every November. These counts are done in association with Mores Reserve, Bluff Hill, and Omaui Reserve.

**Subject:** Bushy Point May 2016 Rodent Tracking Results

“Hi Bushy Point Team,

Attached are the latest rodent monitoring results.

The first rat showed up since November 2014 but as it was only the one I don't think it is anything worth worrying about at this stage. The rat numbers are still very low.

Mice did however show a bit of a spike since their zero tracking index in February. It is unclear why this may have occurred as if it was a response to low rat numbers perhaps they should have been high a long time ago. The pied piper stations you use now should in theory also target the mice.

Good to once again not have any hedgehogs. Looks like that spike in November was possibly just a one off.

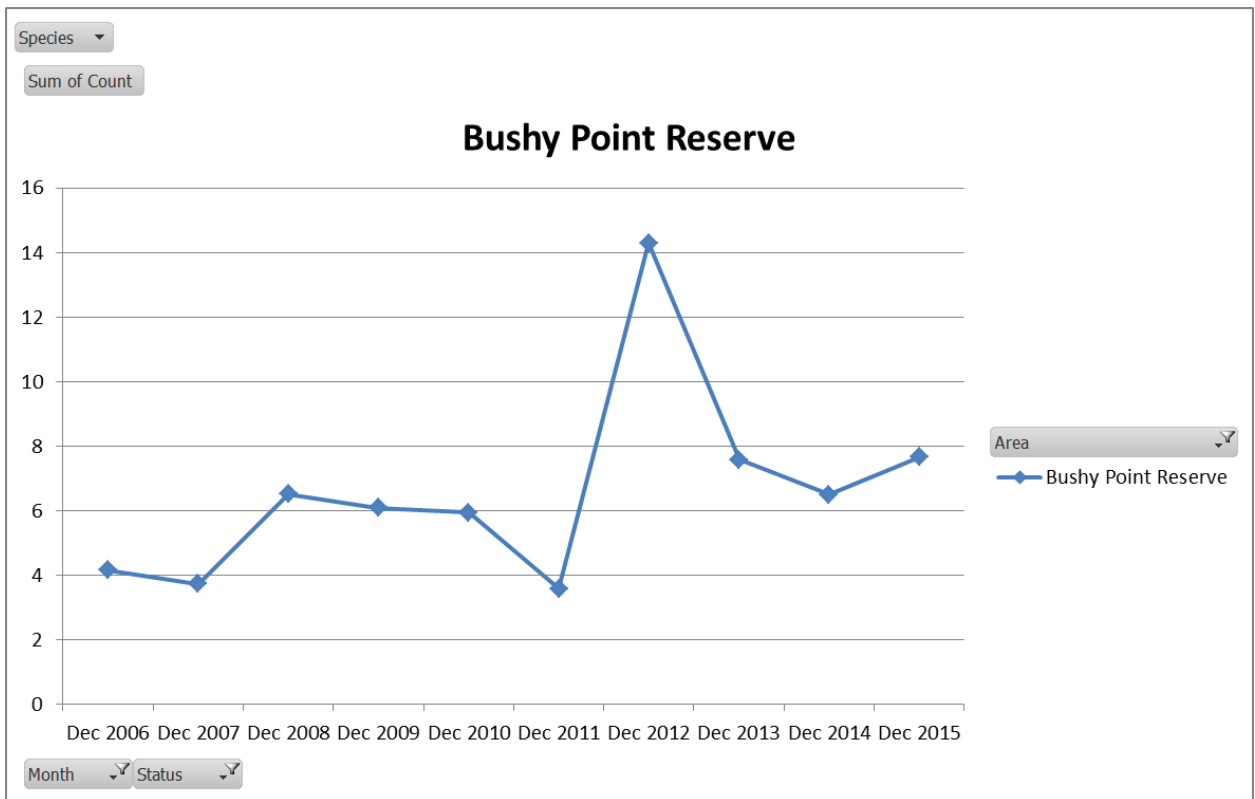
Let me know if you have any questions and once again well done on the great rat control.

Cheers,

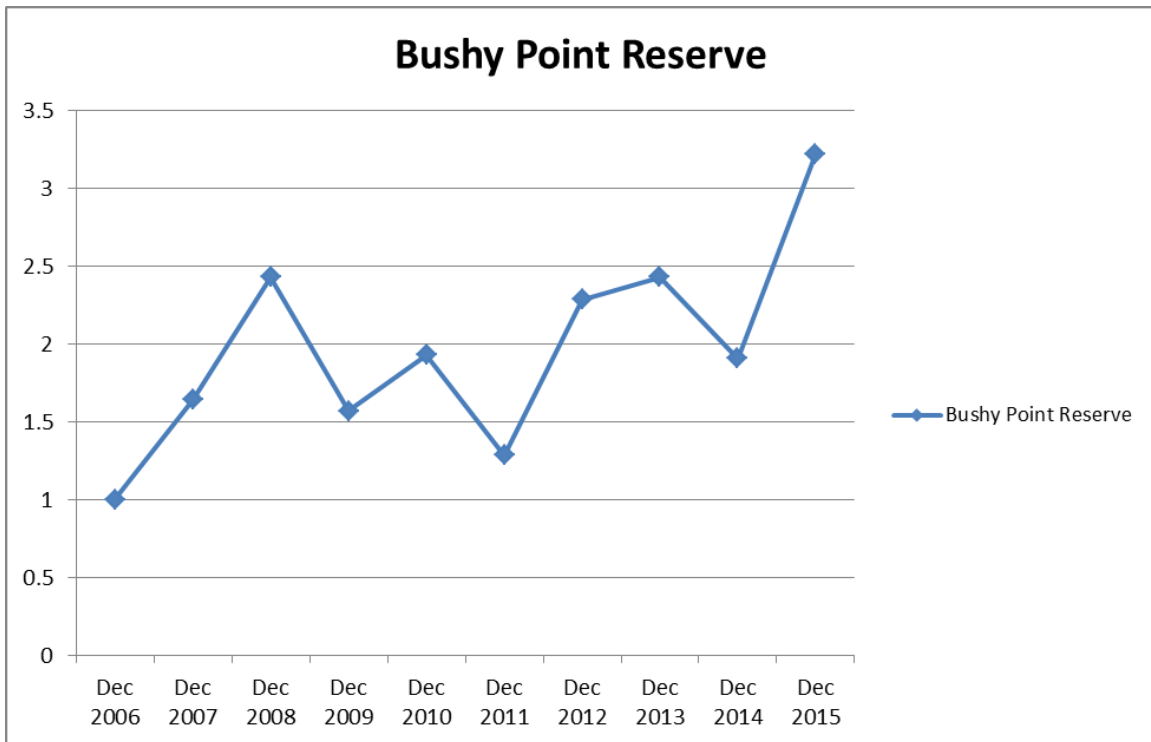
**Tom Harding**

Biosecurity Officer | Environment Southland

## Bird Monitoring Results – all bird species



## Bellbird Results



- Although the bird results will take years to show meaningful trends there have again been some interesting observations by a number of people:
  - Fernbirds appear to be extending territories – regularly seen on Rances pond and in the Bushy Point restoration area (it would be good to establish bird count stations in the restoration area as there were none set up in this area at establishment)..
  - Spoonbill and kingfishers seen at Bushy Point Pond.
  - Flock of brown creepers regularly seen on JKL lines and at Rances
  - Shoveller and Scaup nesting at Rances 2015

Thanks to Shaun Cunningham and Tom Harding and Richard Bowman Environment Southland and Colin Bishop Department of Conservation for ongoing support and advice with pest control in 2015/6.

### **Wider Otatara Pest Control – Otatara Pestbusters**

Otatara Pestbusters (encouraging pest control on private land by their owners), was continued throughout 2015/16. This project (a sub-group of the Otatara Landcare Group) steered by Russell and May Evans has now gained 128 email members doing pest control. The project builds on the 90 hectares of control at Bushy Point and has been supported by Environment Southland and Invercargill City Council funding which has enabled the group to supply traps and bait at a subsidised price. Each person actively engaged in pest control receives a letterbox sign and regular newsletters.

Since 2013/14 Invercargill City Council Reserves at Otatara have been brought into Pestbusters and traps are being serviced by volunteers in those locations.

In 2012 negotiations began to include Otatara South Scenic Reserve into intensive pest control. Department of Conservation funding for 2014 has ensured that this reserve has been intensively trapped for possums, stoats and rats in 2015/16. Thanks go to local resident Peter Simpson for spearheading the pest control in Otatara South Scenic Reserve – supported by Pestbusters, in particular Russell and May Evans.

## **6. Weed Control**

- Gorse, broom and blackberry control continued.
- Weed control of entranceway continued.
- Release spraying of Living Legends 2014 plants – by contractors.
- Hand weeding of plants by volunteers each month – organised by Sally Duston.
- Organisation of 2015 Living Legends planting in a grid to be “mowed” to enable weed control between plantings.
- Blanket spraying of areas in preparation for Living Legends 2015 planting – by contractor.
- Bushy Point is a national “Weedbusters” site.
- The new mulcher mower utilised for gorse control



## **7. Infrastructure**

- Bushy Point Track mowed as required, track improvements made.
- Track around pond created.
- Posts and track markers for self-guided activity trail
- Posts for new track alignment and interpretation
- The new mulcher mower utilised for trackwork
- Equipment and mower sheds upgraded

## **8. Interpretation and public access**

- The Bushy Point walkway continues to be used by individuals and groups.
- Entrance Interpretation Sign map revised and new sign printed and installed
- Rifle Range danger sign with map installed on site
- Living Legends planting with 30 people attending main public planting day 12 September 2015.
- Doggy do bags provided at the entrance to the Bushy Point Track.
- Geocaches including a multi geocache were placed in Bushy Point in 2015
- Monthly workdays organised at Bushy Point

## **General Information and Advocacy**

- Otatara Pigeon Post Newsletter published
- Welcome to Otatara packs delivered to new residents
- Hosted Tacoma School, Washington State 15/02/2016, Southland Girls High School year 7 two day visit 21-22 March 2016. SGHS Science Students 10 and 17 November 2015.

## **9. Volunteers and Public Involvement**

- Number of hours for the year – 967 hours (over 11706 hours in total for the project).
- School visits – Southland Girls High School and Tacoma School USA. Southland Girls High School Break out days 21-22 March 2015 and SGHS science classes November 2015.
- Average of 6 people per monthly working afternoon
- 8 Pest lines (over a 90 hectare area) maintained every 2 weeks by a group of dedicated volunteers.
- A range of “small jobs” (tool sharpening, track work, weed control) put out on email for people to do in their own time, with good results.
- Orienteering event 5 July 2015.

## **10. Grazing/pasture management**

- Horse grazing has continued in 2015/16.

- No sheep grazing but balage taken off.
- Income from horse grazing and balage was \$4126.58

## **11. SIT Student Projects**

- A Study of Malaise-trapped insects over four key habitats at Bushy Point, Otatara  
- Sarah O'Neill
- Vegetation Assemblages and Ground-Truthing Survey using Aerial Images from a drone for the Bushy Point Restoration Project – Phil Lockett

## **12. Funding**

Successful funding applications were submitted to:

- Living Legends Project for 2015/16 – \$5000 for plants, maintenance at Bushy Point
- ES Pest Control funding \$2000 including Pestbusters Otatara South.
- ICC Pest Control funding \$2000 including Pestbusters Otatara South
- DOC Communities Fund CCPF - \$12,613.50 second instalment (including Bush Haven and Otatara South)

## **13. Expenditure and Income**

- General expenditure for Bushy Point 2015/6 was \$14694
- Public Liability Insurance was \$497.77
- Pest Control Expenses were \$6150 (incl Otatara South Reserve)
- Total grazing and balage income for Bushy Point 2015/16 was \$4126.58
- Total grant income for Bushy Point 2015/16 was \$5000 plus \$12,613.50 CCPF (including Bush Haven and Otatara South Pest Control). Next installment 11,239.00 due 30 June 2016.

## **13. Key Tasks for 2016/17**

- Preparation for Living Legends Event - Planting Date – 12 September 2015 – 1500 plants (including school plantings).
- Release spraying 2015 Living Legends plantings
- Preparation spraying for 2016 Living Legends plantings
- Weed control, as required, for previous 14 years of plantings
- Continued track maintenance
- Continue to work with schools at Bushy Point, in particular Southland Girls High School, Otatara School, James Hargest and other schools for Living Legends School planting.
- Weed control particularly gorse paddock and broom on boundaries

- Maintain all pest lines every 2 weeks from spring, employ pulsing of bait.
- Continue work to extend pest control over wider Otatara area
- Work with Invercargill City Council and DOC on stopbank reconstruction and on extending the estuary bikeway to the Otatara side of the estuary.
- Continue Otatara Pestbusters initiative as this will reduce pest invasion into Bushy Point.
- Submit reports to DOC's new Community Conservation Partnership Fund.
- Continue with the monthly calendar of events.
- Consult Environment Southland on the health of the New River Estuary
- Design, create and install a Pest Interpretation Sign at Bushy Point

#### **14. Acknowledgements**

Thanks to the Department of Conservation, Environment Southland, Invercargill City Council, surrounding landowners and volunteers for their efforts in making 2015/16 another very busy and successful year for the Bushy Point Restoration Project.

**Barry Smith**  
**Chair**  
**Otatara Landcare Group**  
**12 July 2016**

## CCPF Funding Summary

### Year1

1	Caretaker Costs for track, plant maintenance, general weed control	\$4000	
2	Animal pest control bait and replacement traps	\$12806	
3	1000 Native eco-sourced plants and protectors and maintenance spraying	\$10518.5	
4	Pest Interpretation panel	\$1720	
5	Project Admin Costs and Public Liability Insurance	\$1855	
6	Native Bird rehabilitation	\$2000	

### Year 2

1	Caretaker Costs for track, plant maintenance, general weed control	\$4000	
2	Animal pest control bait and replacement traps	\$4106	
3	1000 Native eco-sourced plants and protectors and maintenance spraying	\$10518.5	
4	Pest Interpretation panel	nil	
5	Project Admin Costs and Public Liability Insurance	\$1855	
6	Native Bird rehabilitation	\$2000	

### Year 3

1	Caretaker Costs for track, plant maintenance, general weed control	\$4000	
2	Animal pest control bait and replacement traps	\$4106	
3	1000 Native eco-sourced plants and protectors and maintenance spraying	\$10518.5	
4	Pest Interpretation panel	nil	
5	Project Admin Costs and Public Liability Insurance	\$1855	
6	Native Bird rehabilitation	\$2000	

#### **Year 1**

**Installment 1 - \$22,286.50 – 30 September 2014**

**Installment 2 - \$12,613.50 – 15 March 2015**

#### **Year 2**

**Installment 3 - \$11,239.00 – 30 June 2016 (submitted)**

**Installment 4 - \$11,239.00 - 12 July 2016 (submitted)**

#### **Year 3**

**Installment 5 - \$11,239.00**

**Installment 6 - \$11,239.00**

## Images of Bushy Point





## SGHS Science class November 2015





## SGHS Breakout 23 March 2016, Otatara School 23 March 2016



## SIT Student Projects – Malaise insect trap, Drone Project



Figure 3.2 New camera angle with polystyrene insert



Figure 3.3 Bushy Pt mapping sequence showing GPS waypoints. Adapted from "Google maps," (n.d.), Retrieved from <https://www.google.co.nz/maps/@-46.4473385,168.3214709,409m/data=!3m1!1e3>



Figure 3.3. Crane fly, Order: Diptera.

## **Geocaching – Comments on Bushy Point caches**

Between the five geocaches at Bushy Point there have been a total of 176 finds, 57 of these in the last year.

*A beautiful day for a walk in this lovely area. Really enjoyed this cache, thanks!*

*Joint find with Granville86a on our second attempt. Great wee multi on one of my favourite places. Thanks to the Otatara Landcare group who has done a fantastic job, looking forward to seeing the area grow and develop. Thanks Jo and Joe for the Multi and bringing us back out this way with this fun wee multi, has some great components to it. For those with DNF's trust your GPS and the hint! TFTC*

*Found this cache with other geocachers attending Bushy Point Event. A stunning day for caching around the Reserve. Great hides. Well thought out Event and cache hide. Thank you Jojoes for your brilliant efforts and creativity.*

*A fairly quick find once we found the "track" up the peak. Another nicely hidden cache worth a favourite TFTC*

*Nice spot, thanks for bringing me here, might not have been if not for a cache. Thank you*

*Thanks for the cool cache. The container is the coolest I've seen! I hadn't been to Bushy Point before; looks like a great project! The log book was too wet to sign unfortunately.*

*quick find! good selection of birds to see! Cheers*

*Carried on to find this one despite the rain coming in with vengeance. Nice walkway.*

*just love these caches that take you to places you didn't know existed even though you have lived by them for most of your life! My son was quite intrigued about the rifle range. He was also quite "tickled" about the actual cache - very clever!*

*A nice reserve that we didn't know existed. A pleasant walk with another cache near by. TFTC*

*Awesomeness!! TFTC! Team sandy! Awesome walk. SL TFTC.*

*Tftc always enjoy a stroll through here - birds are having a lively time this evening :-)*

*Lovely walk, thanks for bringing me here.*

*Sally pointed it out to me, as we were taking a group around Bushy Point from Tacoma, Washington. I explained geocaching to them, and one of them also signed. TFTC*

**TFTC = “Thanks For The Cache” (apparently!)**



## Living Legends Planting Area 2015





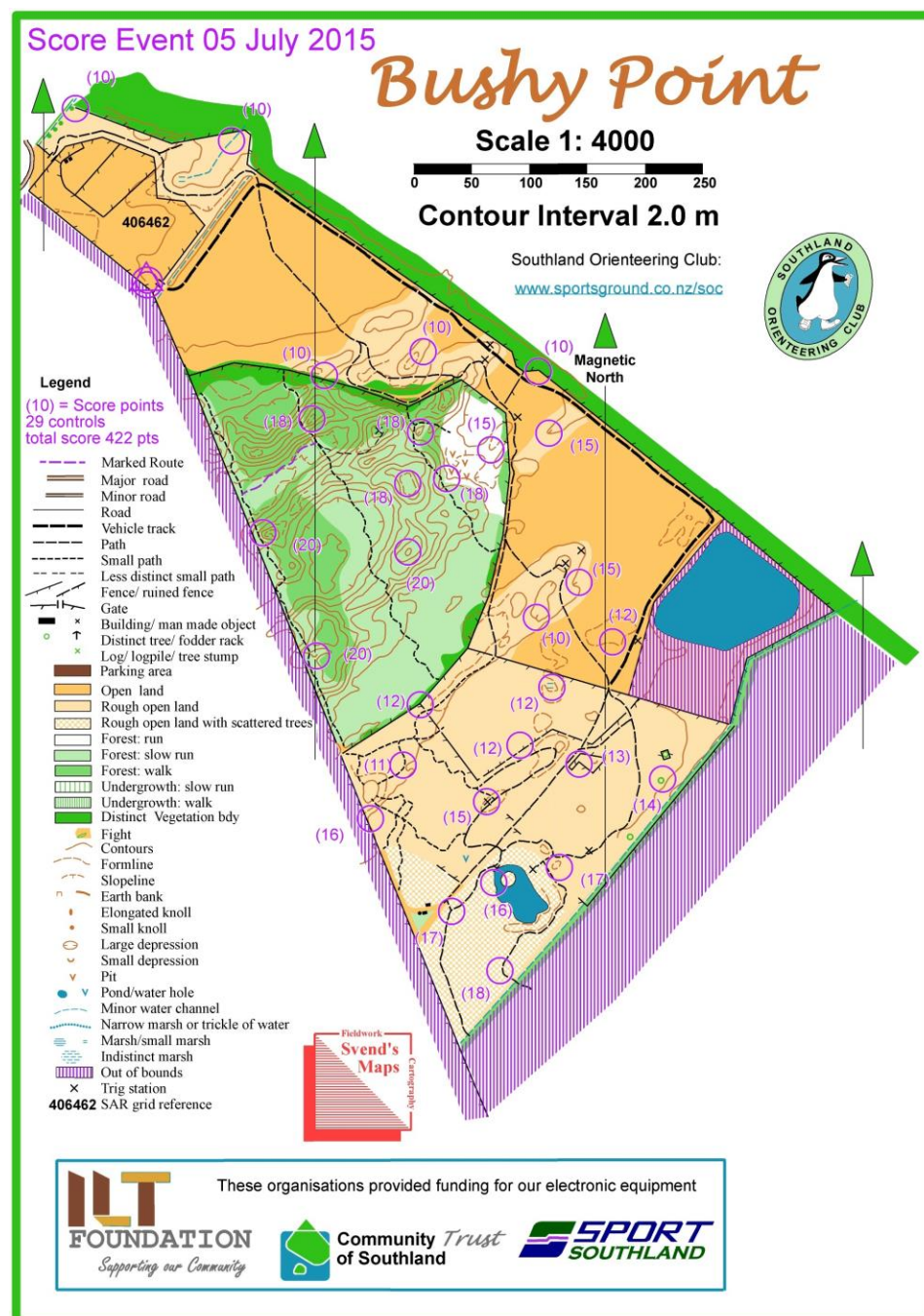
## Living Legends 2015





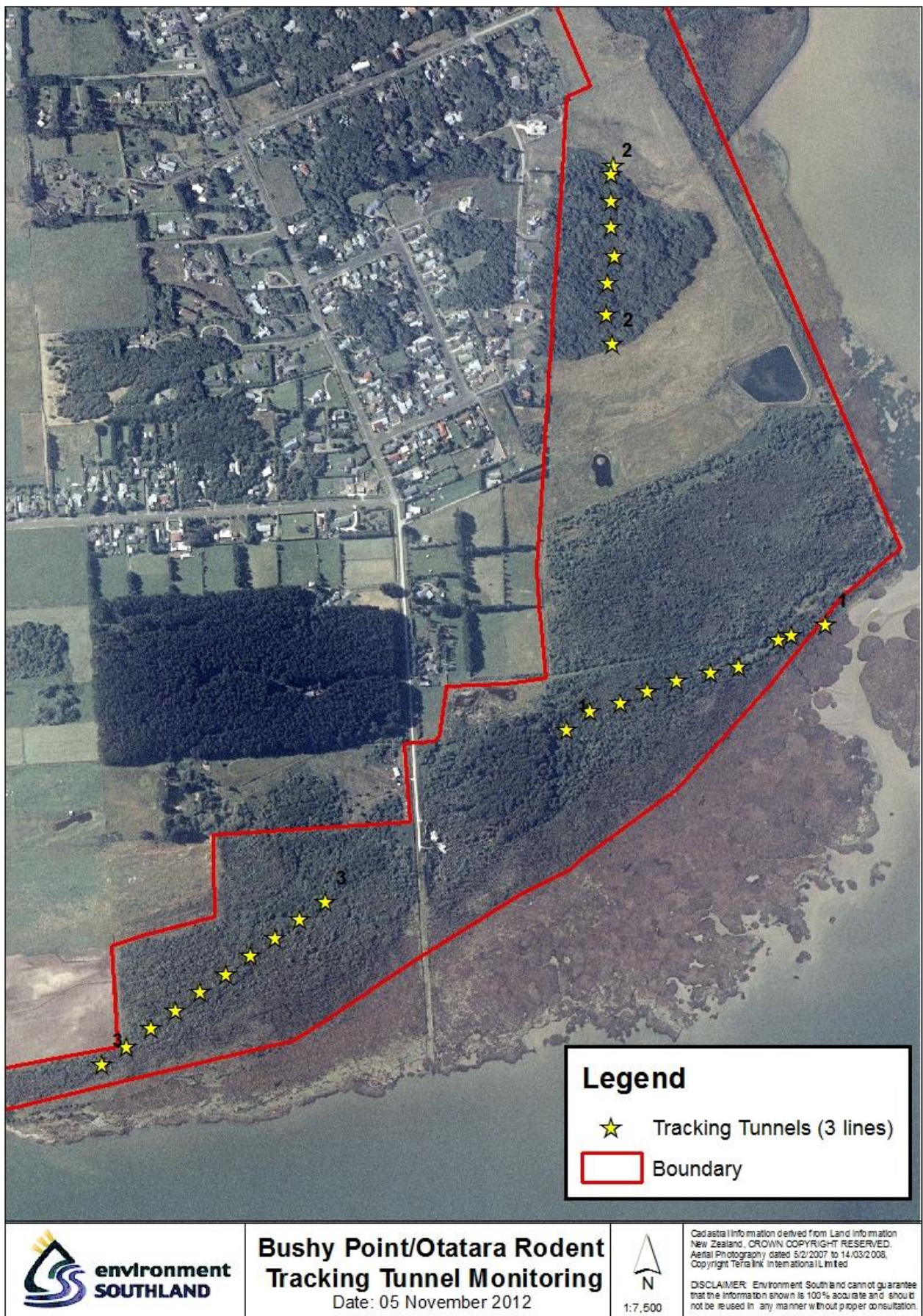
## Orienteering Event Bushy Point 5 July 2015

- 45 people attended the Score Event in July, which was part of the Winter Series. A Score Event consists of a large number of control sites which award different points, depending on difficulty. Everyone has an hour to get as many points as they can and, if they are late, they have 10 points deducted per minute or part of, for every minute late back. It was great to see so many people enjoying Bushy Point and exploring every corner of the reserve.
- The electronic age of orienteering with its sportIdent programme, has been very attractive to new orienteers and we are looking forward to holding another event at Bushy Point in August 2016





## Rodent Monitoring lines at Bushy Point





# Map of Bird Count Locations at Bushy Point 2015/2016

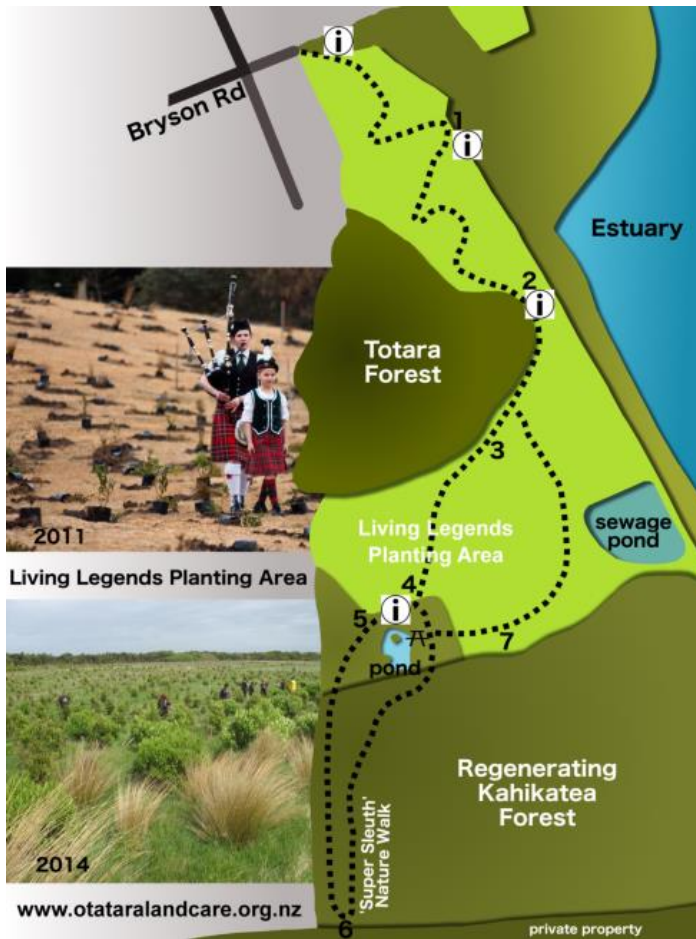




**Bushy Point Pest Control**



## New Track Alignment Sign and Rifle Range Sign





## Monthly working days, Matariki Night Event



## Mulcher Mower Work



Above - About to start mowing the weeds in the gorse block - 24 January 2016 - Barry Smith  
Below – carting plants from the Community Nursery to Bushy Point



**Antipodes Islands Talk – 15 June 2015,  
Matariki Night Walk and Supper 20 June 2015**

**History Night and schools project 30 July 2015**

**Otatara's stories**  
a trip down memory lane

30 July 6 p.m. at Otatara Community Hall, Dunns Road

Eighty people attended the event. The involvement of Otatara School with presentations from several students who have strong local family associations was one of the strengths of this second historic Otatara evening. Once again community support for displays and publicity was forthcoming, including the Fire Museum, Four Square Dairy, RD Mail Contractor and the ILT Foundation. Riding for the Disabled provided an indoor 'sausage sizzle' as a fund raiser, which made it possible for an early start and finish for young families.

Lloyd Esler combined the role of MC with a light-hearted re-enactment of the ceremonial release of rabbits at Sandy Point in 1863. Then followed a 'Who? What? Where?' quiz using projected historic images of notable Otatara places, people and occasions.

The last part of the evening was open to everyone to share stories and memories. Although a number of long-standing residents (and former residents) were present, few were willing to speak and most of the chatting was done informally in small groups. One possibility for future occasions is to ask participants to bring with them one item – photo, artefact, clothing, tool – that holds a strong personal memory of Otatara. The object would then become the centre of an 'armchair chat' or alternatively be introduced through one of us ... perhaps a less scary approach.

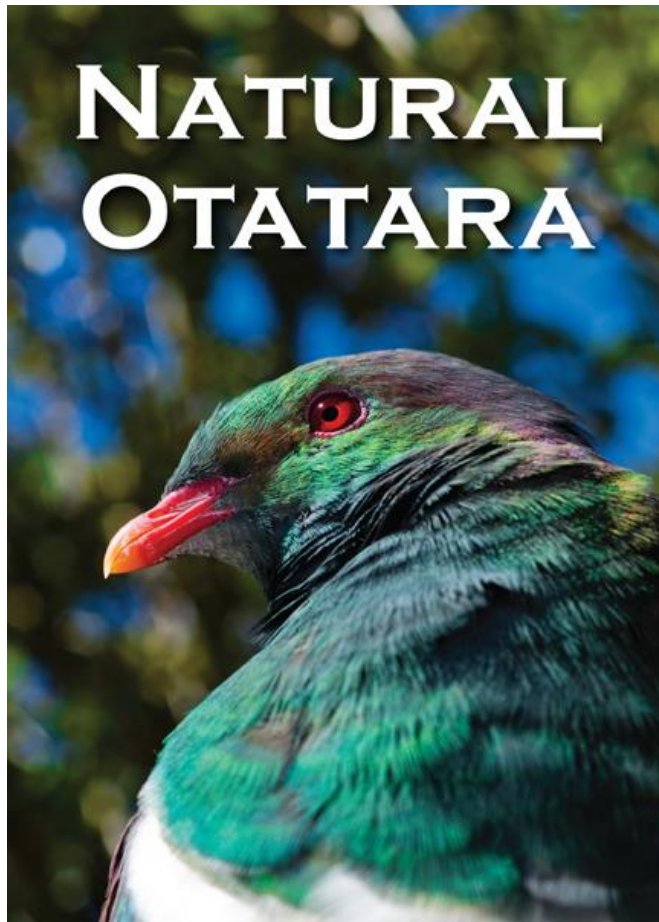
The general consensus is that such evenings are popular and worthwhile as a biennial event.

**Cathy Macfie**





**General Advocacy - Natural Otatara Booklet, Kereru Road Signs,  
Otatara Pestbusters, Otatara Pigeon Post Newsletter**



**PIGEON POST**

**Issue 52 May 2016**

Hello folks, welcome to Pigeon Post, the newsletter of the Otatara Landcare Group. In this newsletter we bring you news of the latest happenings in our area and snippets of information about our past and ideas about improving our environment

**Your committee:** Chairman Barry Smith 2131500

Secretary Chris Rance 2131161 Treasurer Glenda Graham 2131397 Pigeon Post editor Lloyd Esler 2130404

Please contact the Otatara Landcare Group if you have questions, ideas or problems relating to the Otatara and Sandy Point areas.

**AGM - Wednesday 25 May 2016 at the Otatara Community Church Hall, Oreti Road 7pm followed by slide talk - Haida Gwaii / Queen Charlotte Islands - Pete McClelland's latest adventures on the north coast of British Columbia!**

**Membership of the Otatara Landcare Group**

The Landcare Group is a Charitable Trust supported by members and volunteers. If you would like to support the work of this group or become involved in projects to enhance the natural values of the Otatara Area please consider joining or making a donation – the Bushy Point project alone costs the group over \$10,000 a year and it is a public space available for everyone to enjoy.

The OLG organises monthly events – <http://www.otataralandcare.org.nz/news-events/> and also manages the Bushy Point Restoration Project so you can be involved in a very hands on project – <http://www.otataralandcare.org.nz/bushy-point-restoration/>

**Life membership just \$50, annual membership \$20**

Subs or donations can be deposited directly into the OLG bank account 03 1355 0805312 00 but please make sure they are labelled with your name and o/g subs as references. Please email ([otataralg@gmail.com](mailto:otataralg@gmail.com)) or send cheque to our treasurer Glenda Graham – 33 Rakiura Parade, Otatara – please put your name address phone number and email address.

**OLG Calendar of Events for 2016** - attached at the end of this newsletter and on the OLG website <http://www.otataralandcare.org.nz/news-events/>





# Otatarā Landcare Group Events Calendar 2015/16

<b>FEBRUARY</b> <b>Friday 5, 12, 19, 26</b>  <b>Sunday 14</b>  <b>Wednesday 17</b>  <b>Monday 22</b>	<p><b>Southland Community Nursery</b>, 185 Grant Road - volunteer mornings – 9am-noon (ph Chris 2131161). <a href="http://www.southlandcommunitynursery.org.nz">www.southlandcommunitynursery.org.nz</a> (park at 183 Grant Road car park).</p> <p><b>Bushy Point work day – 1pm-3pm</b> (ph Sally 2131403)</p> <p><b>Visit a “natural swimming pool”</b> in the making 7-8pm - Malcolm Williams - 30 Taiepa Road, Otatarā (come down drive 32-34 and park on right)</p> <p><b>Chilean flame creeper removal, Bowman’s Bush</b>, Ruru Ave – 7pm-9pm (ph Randall 2130851)</p>
<b>MARCH</b> <b>Friday 4, 11, 18</b>  <b>Saturday 12</b>  <b>Monday 21 Tuesday 22</b>	<p><b>Southland Community Nursery</b>, 185 Grant Road - volunteer mornings including seed collecting – 9am-noon (ph Chris 2131161). <a href="http://www.southlandcommunitynursery.org.nz">www.southlandcommunitynursery.org.nz</a> (park at 183 Grant Road car park)</p> <p><b>KCC exploration and “Boats, Kites and Bubbles”</b>- Southland Community Nursery, Otatarā – 2- 4pm. Leaders Chris Rance 2131161, Bronwyn KCC - Southland Community Nursery, 185 Grant Road. <a href="http://www.southlandcommunitynursery.org.nz">www.southlandcommunitynursery.org.nz</a> (park at 183 Grant Road car park)</p> <p><b>Southland Girls High School Breakout</b> days at Bushy Point, volunteer help always appreciated (ph Chris 2131161 evenings). This replaces our March Bushy Point working day so feel free to come and help. <b>All help appreciated – start 9.30am-2pm – entry through Barrys at 173 Grant Road, Otatarā.</b></p>
<b>APRIL</b> <b>Friday 1, 8, 15, 22, 29</b>  <b>Saturday 2</b>  <b>Sunday 10</b>  <b>Sunday 17</b>	<p><b>Southland Community Nursery</b>, 185 Grant Road - volunteer mornings – 9am-noon (ph Chris 2131161). <a href="http://www.southlandcommunitynursery.org.nz">www.southlandcommunitynursery.org.nz</a> (park at 183 Grant Road car park)</p> <p>Sport Southland <b>Family Fun Day at Daffodil Bay</b></p> <p><b>Bushy Point work day – 1pm-3pm</b> (ph Sally 2131403)</p> <p><b>NATIVE PLANT SALE – 1-3pm Southland Community Nursery</b>, 185 Grant Road</p>
<b>MAY</b> <b>Friday 6, 13, 20, 27</b>  <b>Sunday 8</b>  <b>Friday 13</b>  <b>Sunday 15</b>  <b>Wed 25</b>	<p><b>Southland Community Nursery</b>, 185 Grant Road - volunteer mornings – 9am-noon. (ph Chris 2131161) (park at 183 Grant Road car park) <a href="http://www.southlandcommunitynursery.org.nz">www.southlandcommunitynursery.org.nz</a></p> <p>Look for <b>fish in the Otatarā Scenic Reserve</b> with Maurice Rodway, followed by a <b>“grand traverse” of the Reserve</b> lead by Lloyd and his gps! Meet 1pm Otatarā Hall, Dunns Road ph Sally 2131403</p> <p><b>Apple Pressing Workshop</b> – Southland Community Nursery – 1pm-4pm (park at 183 Grant Road car park) <a href="http://www.southlandcommunitynursery.org.nz">www.southlandcommunitynursery.org.nz</a></p> <p><b>Bushy Point Planting Day</b> 1pm-3pm ph Sally 2131403</p> <p><b>Otatarā Landcare Group AGM – 7-9pm</b> – Otatarā Church Hall, Oreti Road followed by speaker Pete McClelland on Queen Charlotte Islands British Columbia</p>
<b>JUNE</b> <b>Friday 3, 10, 17, 24</b>	<p><b>Southland Community Nursery</b>, 185 Grant Road - volunteer mornings – 9am-noon. Friday 10 and 17 will be <b>CUTTINGS WORKSHOPS</b> please book a place (ph Chris 2131161). (park at 183 Grant Road car park)</p>

<b>Monday 13</b>	<b>Chatham Islands Illustrated talk night – Lloyd Esler and Brian Rance.</b> Venue Otatara Community Church hall Oreti Road. 7.30pm. Gold Coin Donation.
<b>Saturday 18</b>	<b>Matariki Night Celebration and BYO Supper to share</b> at Community Nursery Education Centre – 7pm-9pm - park 183 Grant Road (ph Chris 2131161). <a href="http://www.southlandcommunitynursery.org.nz">www.southlandcommunitynursery.org.nz</a>
<b>Sunday 26</b>	<b>Bushy Point Work Day</b> 1pm-3pm ph Sally 2131403
<b>JULY</b>	
<b>Friday 1, 8</b>	<b>Southland Community Nursery</b> , 185 Grant Road - volunteer mornings – 9am-noon (ph Chris 2131161). Nursery closed for winter after – reopens 23 September.
<b>Sunday 17</b>	<b>Bushy Point Work Day</b> 1pm-3pm ph Sally 2131403
<b>AUGUST</b>	
<b>Sunday 7</b>	<b>Orienteering Event at Bushy Point</b> (ph Sally 2131403) <b>START 11.30am-1pm</b>
<b>Saturday 13</b>	<b>Kiwi Conservation Club Children’s Exploration Trip</b> – Southland Community Nursery Education Centre – 2-4pm. Leaders Chris Rance 2131161, Bronwyn KCC 2130017
<b>Sunday 14</b>	<b>Bushy Point Work Day</b> 1pm-3pm ph Sally 2131403
<b>SEPTEMBER</b>	
<b>Saturday 10</b>	<b>Last Living Legends Big tree planting day for families at Bushy Point</b> (ph Barry 2131500) <b>REPLACES Monthly WORK DAY</b>
<b>Date TBC</b>	<b>BEE Workshop</b> - All you want to know about BEES – Southland Bee Society. Venue Southland Community Nursery Education Centre
<b>Friday 23</b>	<b>Southland Community Nursery</b> , 185 Grant Road - volunteer mornings – 9am-noon (ph Chris 2131161). <a href="http://www.southlandcommunitynursery.org.nz">www.southlandcommunitynursery.org.nz</a>
<b>OCTOBER</b>	
<b>Friday 7, 14, 21, 28</b>	<b>Southland Community Nursery</b> , 185 Grant Road - volunteer mornings – 9am-noon (ph Chris 2131161). <a href="http://www.southlandcommunitynursery.org.nz">www.southlandcommunitynursery.org.nz</a> (park at 183 Grant Road car park)
<b>Sunday 16</b>	<b>Bushy Point Work day</b> 1pm-3pm (ph Sally 2131403)
<b>NOVEMBER</b>	
<b>Friday 4, 11, 18, 25</b>	<b>Southland Community Nursery</b> , 185 Grant Road - volunteer mornings – 9am-noon (ph Chris 2131161). <a href="http://www.southlandcommunitynursery.org.nz">www.southlandcommunitynursery.org.nz</a> (park at 183 Grant Road car park)
<b>Sunday 6</b>	<b>Kiwi Conservation Club Childrens Exploration Trip</b> – Southland Community Nursery Education Centre – 2-4pm. Leaders Chris Rance 2131161, Bronwyn KCC 2130017
<b>Sunday 13</b>	<b>Bushy Point Work day</b> 1pm-3pm (ph Sally 2131403)
<b>DECEMBER</b>	
<b>Friday 2, 9, 16</b>	<b>Southland Community Nursery</b> , 185 Grant Road - volunteer mornings – 9am-noon (ph Chris 2131161). <a href="http://www.southlandcommunitynursery.org.nz">www.southlandcommunitynursery.org.nz</a> (park at 183 Grant Road car park)
<b>Sunday 11</b>	<b>Eco-Fun Day at Bushy Point and Southland Community Nursery</b> 1pm-3pm (ph Sally 2131403) (park at 183 Grant Road car park) and pick up your eco-pack from the Education Centre. Also Bushy Point work day 1-3pm for those averse to having fun!
<b>Wednesday 21</b>	<b>Trig Walk Bushy Point</b> (Leader Barry Smith 2130500) – 6pm

